

| ALTERNATOR | ALTERNATOR WEIGHT KG [LBS] | GENSET WEIGHT WITH NO RADIATOR * KG [LBS] | GENSET WEIGHT WITH RADIATOR ** KG [LBS] |
|---------------|-------------------------------|--|--|
| MVDIG142F8003 | 11231 [24760] | 29000 [63934] | 34700 [76500] |
| MVDIG142F8024 | 11231 [24760] | 29000 [63934] | 34700 [76500] |
| MVDIG142F8010 | 11231 [24760] | 29000 [63934] | 34700 [76500] |
| MVDIG142F8031 | 11231 [24760] | 29000 [63934] | 34700 [76500] |
| MVDIG142F8032 | 11808 [26032] | 29600 [65257] | 35300 [77823] |

- NOTES:
- ALL DIMENSIONS ARE IN MILLIMETERS WITH IMPERIAL INCH CONVERSIONS IN "[]".
1.1 IN EVENT OF A DISCREPANCY BETWEEN METRIC AND IMPERIAL DIMENSIONS, THE METRIC DIMENSIONS CONTROL.
1.2 ALL DIMENSIONS ARE REFERENCE, UNLESS SPECIFICALLY TOLERANCED.
 - WEIGHT: REFER TO TABLE FOR STANDARD GENSET WITH E127-2, E128-2 COOLING SYSTEM SHOWN
*2.1 INCLUDES WEIGHT OF 606 LITERS [160 GALLONS] SUPPLIED ENGINE OIL.(530 Kg/1168 LBS)
**2.2 INCLUDES DRY WEIGHT OF RADIATOR 4555 Kg [10042 LBS] (SHIPS LOOSE)
**2.3 INCLUDES WEIGHT FOR 1120.5 LITERS [296 GALLONS] OF NON-SUPPLIED COOLANT. (1139 Kg/2511 LBS) BASED ON 50:50 ETHYLENE GLYCOL
 - LARGEST NOMINAL DIMENSIONS:
3.1 LENGTH 8384 [330.1]
3.2 WIDTH 3028 [119.2] RADIATOR
3.3 HEIGHT 3662 [144.2] TOP OF RADIATOR CAP
3.4 DOES NOT INCLUDE THE HEIGHT OF THE VIBRATION ISOLATORS.
 - LIFTING INSTRUCTIONS: REFER TO GENSET INSTALLATION MANUAL AND LIFTING LABEL.
4.1 GENSET SHALL NOT BE LIFTED USING THE LIFTING EYES WHEN ATTACHED TO THE RADIATOR. RADIATOR AND GENSET SHALL ALWAYS BE LIFTED SEPARATELY PER INSTALLATION MANUAL AND LIFTING DIAGRAMS.
 - ALLOW 1 METER AROUND THE GENSET FOR SERVICE.
 - ISOLATORS ARE MODELED IN THEIR UNCOMPRESSED STATE AND THEIR HEIGHT CHANGE UNDER LOAD MUST BE CONSIDERED FOR SITE CONNECTIONS. WHEN PROPERLY INSTALLED, STANDARD GENSET ISOLATORS WILL DEFLECT APPROXIMATELY 13 mm FROM THEIR UNCOMPRESSED HEIGHT. RESTRAINED ISOLATORS WILL INCREASE IN HEIGHT BY APPROXIMATELY 5 mm. CUSTOMER EXHAUST AND SITE CONNECTIONS SHALL BE CAPABLE OF ACCOMMODATING THIS RANGE
 - FOR CONTROL DISPLAY AND PEDESTAL PLACEMENT REFER TO GENSET INSTALLATION MANUAL.
 - SEE NOTES ON SHEET 6

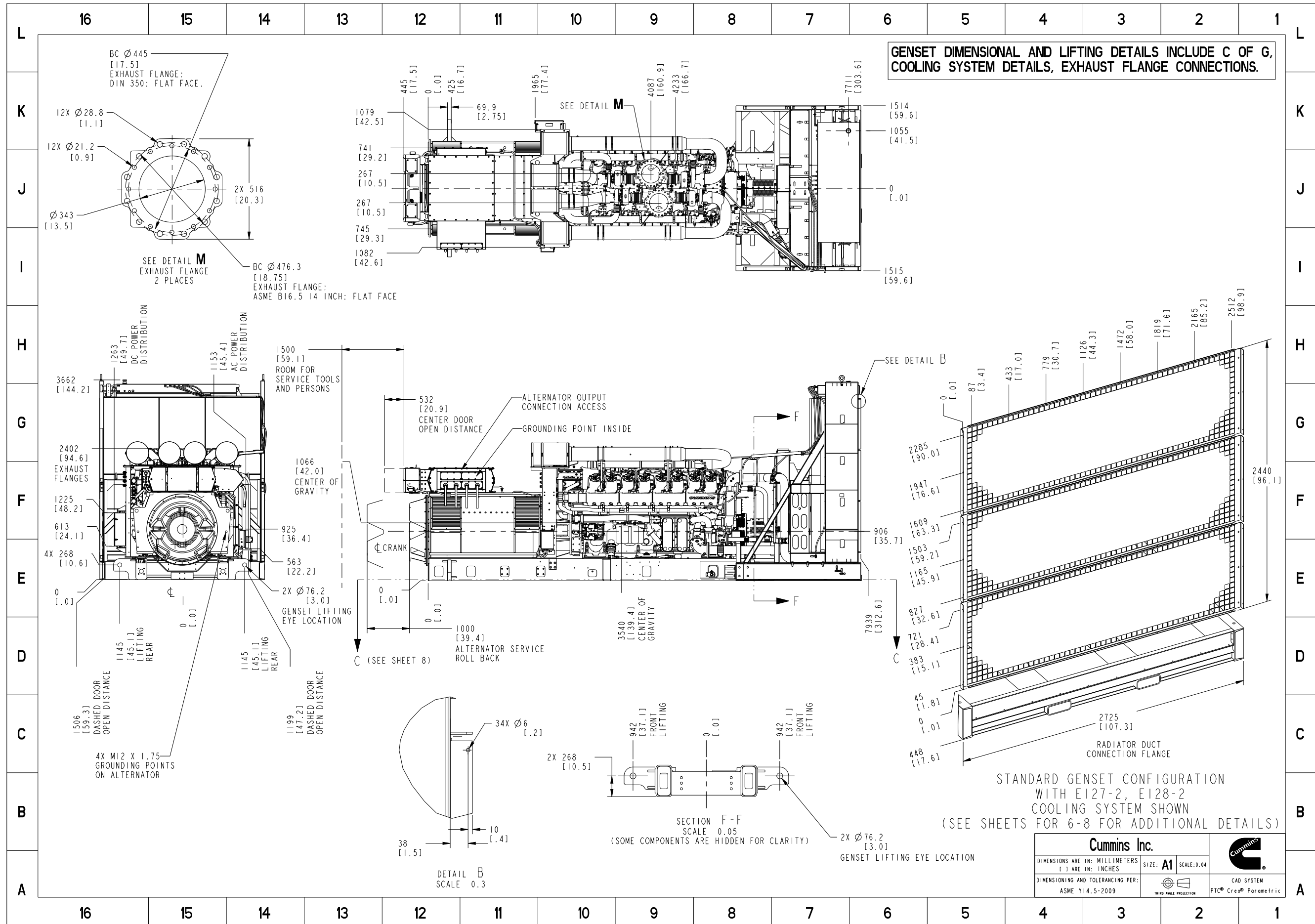
STANDARD GENSET CONFIGURATION
WITH MVDIG142F8032 ALTERNATOR AND
E127-2, E128-2 COOLING SYSTEM SHOWN

| | |
|--|--------------------------------------|
| LAST DATUM LETTER USED: | LAST REFERENCE LETTER USED: W |
| MODEL/PLATFORM: C3250D6 | THIS PART IS SIMILAR TO: |
| Cummins Inc. | |
| DIMENSIONS ARE IN: MILLIMETERS [] ARE IN: INCHES | SIZE: A1 SCALE: 0.04 |
| DIMENSIONING AND TOLERANCING PER: ASME Y14.5-2009 | THIRD ANGLE PROJECTION |
| CAD SYSTEM PTC® Creo® Parametric | |

Cummins Data Classification: **Cummins Confidential**
This document (and the information shown thereon) is **Confidential and Proprietary** and shall not be disclosed to others in hard copy or electronic form, reproduced by any means, or used for any purpose without written consent of Cummins Inc.

Part Number: **A049P721** Part Revision: **F**
Part Name: **OUTLINE,GENSET**
Drawing Category: **Detail** State: **Released** Sheet 1 of 10

Document Generated: 25MAR2025 19:04 GMT

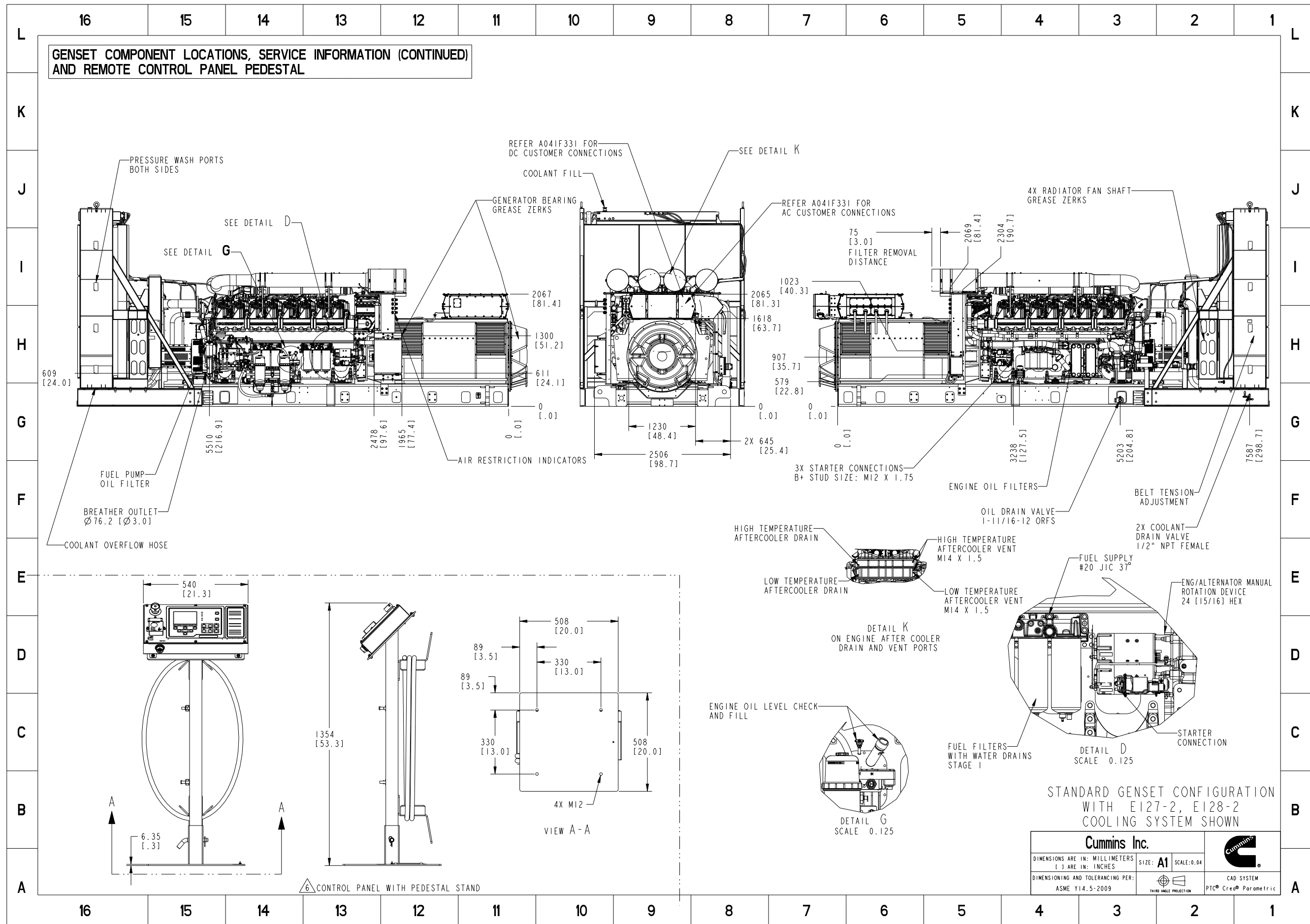


Document Generated: 25MAR2025 19:04 GMT

Cummins Data Classification: **Cummins Confidential** This document (and the information shown thereon) is **Confidential and Proprietary** and shall not be disclosed to others in hard copy or electronic form, reproduced by any means, or used for any purpose without written consent of Cummins Inc.

Part Number: **A049P721** Part Revision: **F**
 Part Name: **OUTLINE,GENSET**
 Drawing Category: **Detail** State: **Released** Sheet 2 of 10

| | | |
|--|-----------------------------|-------------------------------------|
| Cummins Inc. | | |
| DIMENSIONS ARE IN: MILLIMETERS () ARE IN: INCHES | | |
| DIMENSIONING AND TOLERANCING PER: ASME Y14.5-2009 | SIZE: A1 SCALE: 0.04 | CAD SYSTEM PTC® Creo® Parametric |

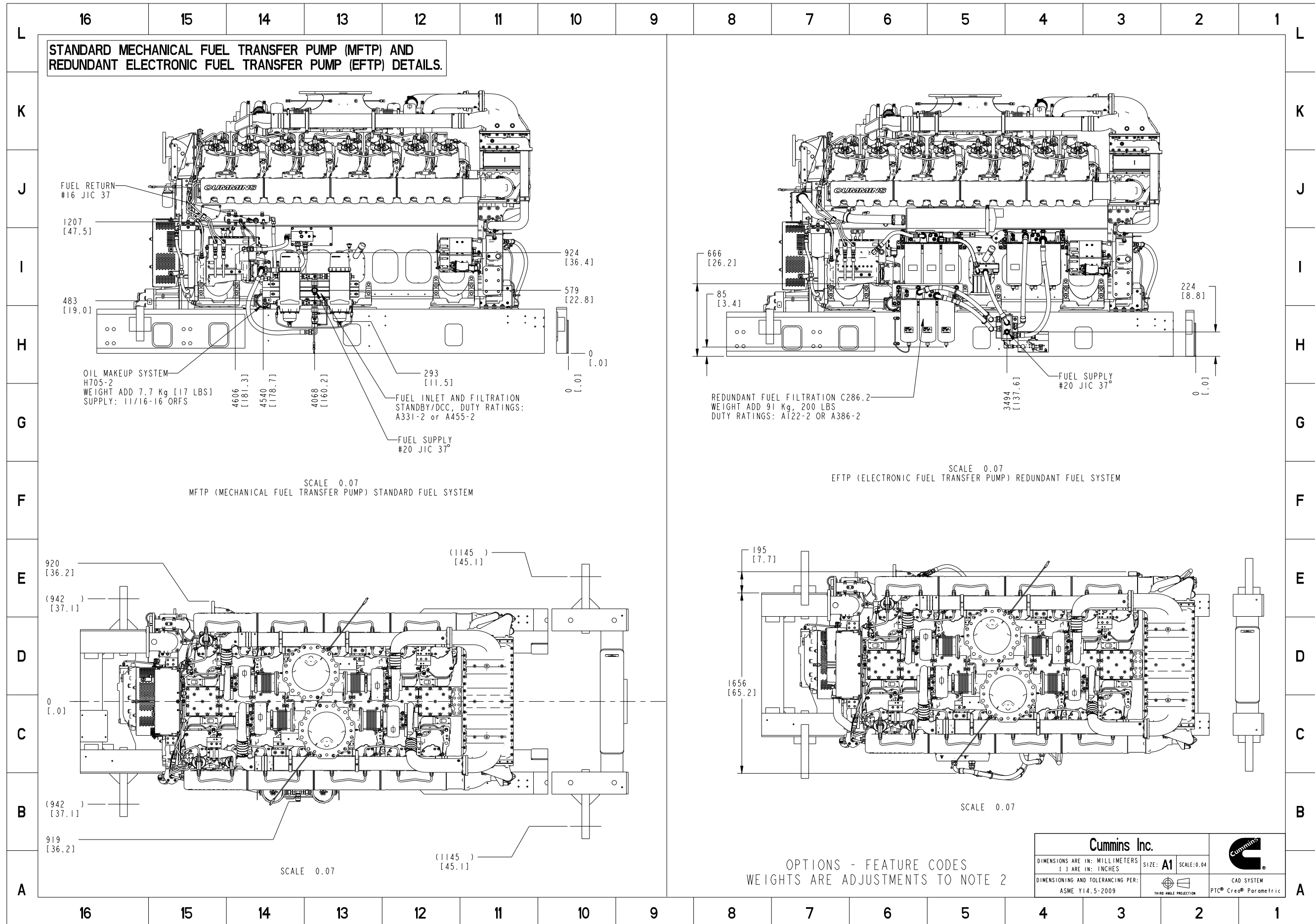


Document Generated: 25MAR2025 19:04 GMT

Cummins Data Classification: This document (and the information shown thereon) is **Confidential and Proprietary** and shall not be disclosed to others in hard copy or electronic form, reproduced by any means, or used for any purpose without written consent of Cummins Inc.

Cummins Confidential

Part Number: **A049P721** Part Revision: **F**
 Part Name: **OUTLINE,GENSET**
 Drawing Category: **Detail** State: **Released** Sheet 3 of 10

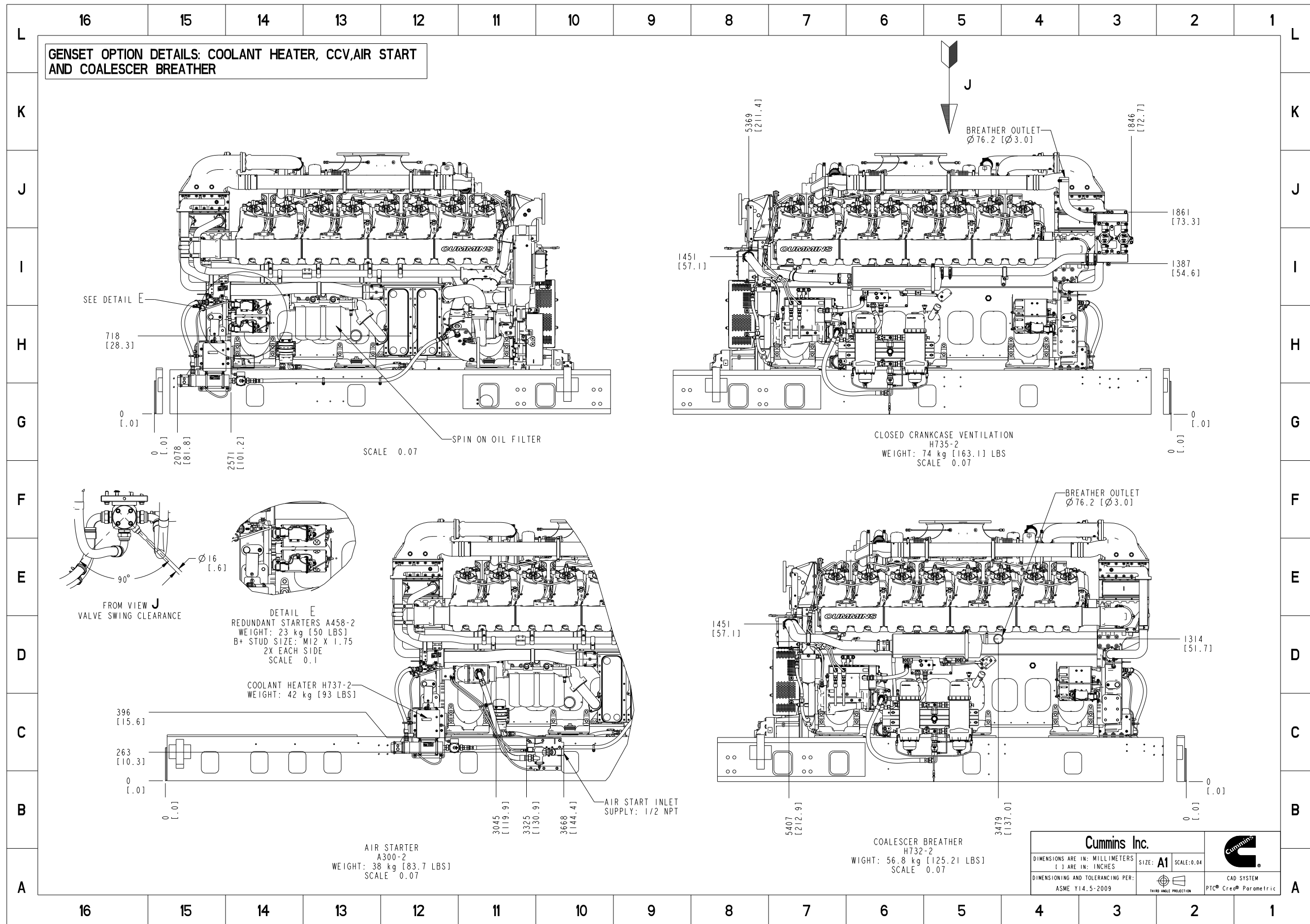


Cummins Data Classification: This document (and the information shown thereon) is **Cummins Confidential** and shall not be disclosed to others in hard copy or electronic form, reproduced by any means, or used for any purpose without written consent of Cummins Inc.

Part Number: **A049P721** Part Revision: **F**
 Part Name: **OUTLINE,GENSET**
 Drawing Category: **Detail** State: **Released** Sheet 4 of 10

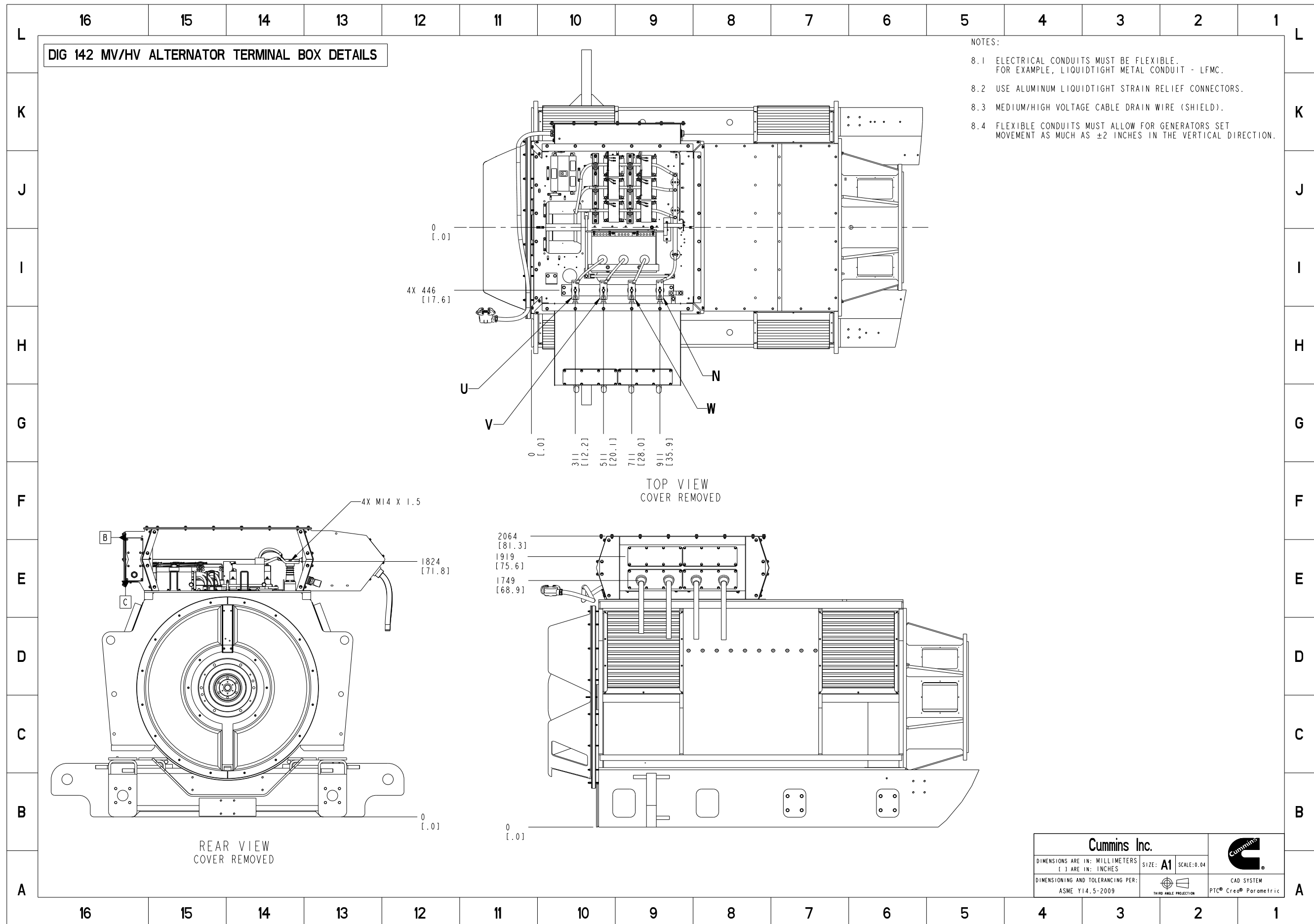
Document Generated: 25MAR2025 19:04 GMT

| | | |
|--|-----------------------------|-------------------------------------|
| Cummins Inc. | | |
| DIMENSIONS ARE IN: MILLIMETERS () ARE IN: INCHES | SIZE: A1 SCALE: 0.04 | |
| DIMENSIONING AND TOLERANCING PER: ASME Y14.5-2009 | | CAD SYSTEM PTC® Creo® Parametric |



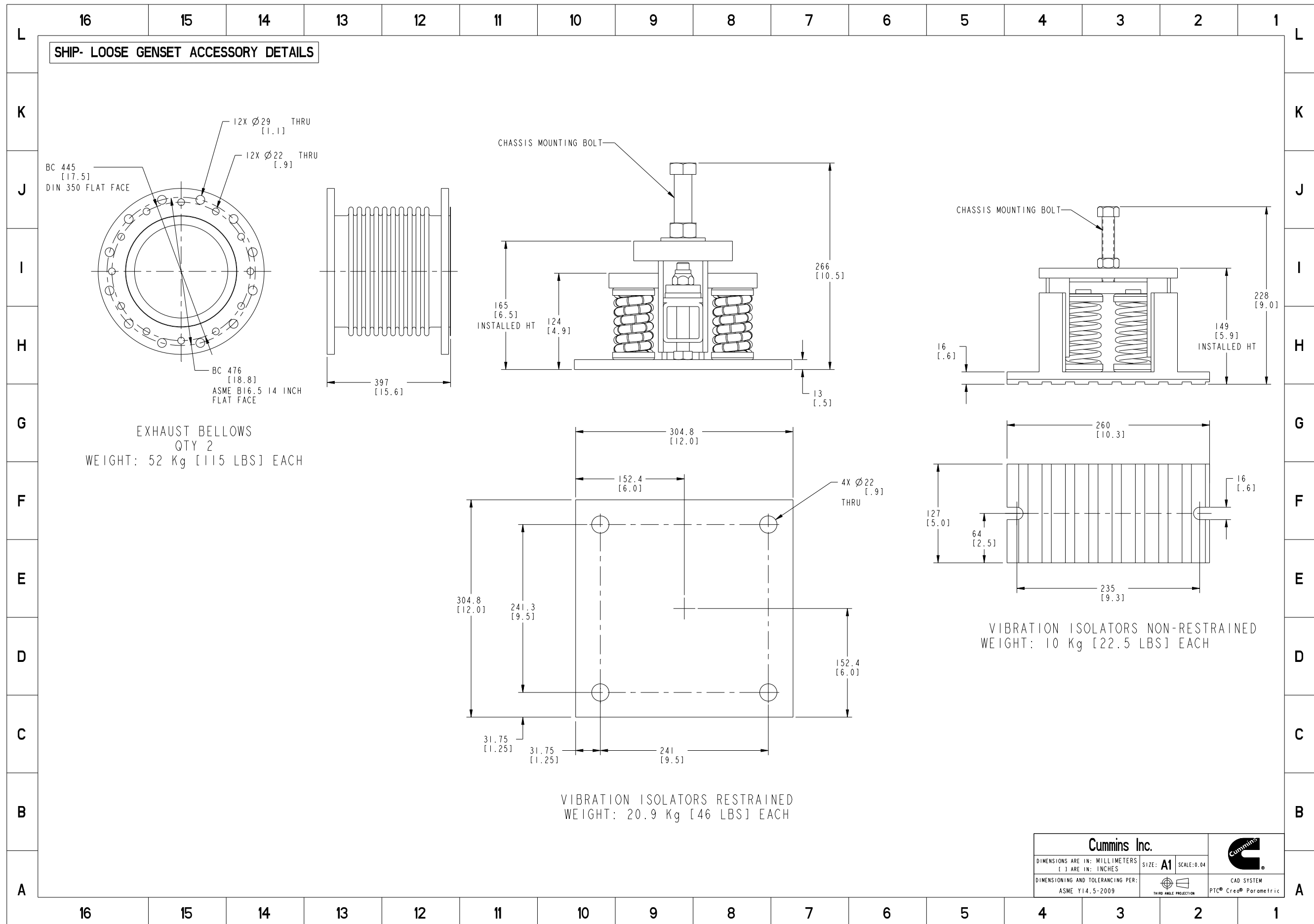
Cummins Data Classification: This document (and the information shown thereon) is **Cummins Confidential** and shall not be disclosed to others in hard copy or electronic form, reproduced by any means, or used for any purpose without written consent of Cummins Inc.


Part Number: **A049P721** Part Revision: **F**
 Part Name: **OUTLINE, GENSET**
 Drawing Category: **Detail** State: **Released** Sheet **5** of **10**

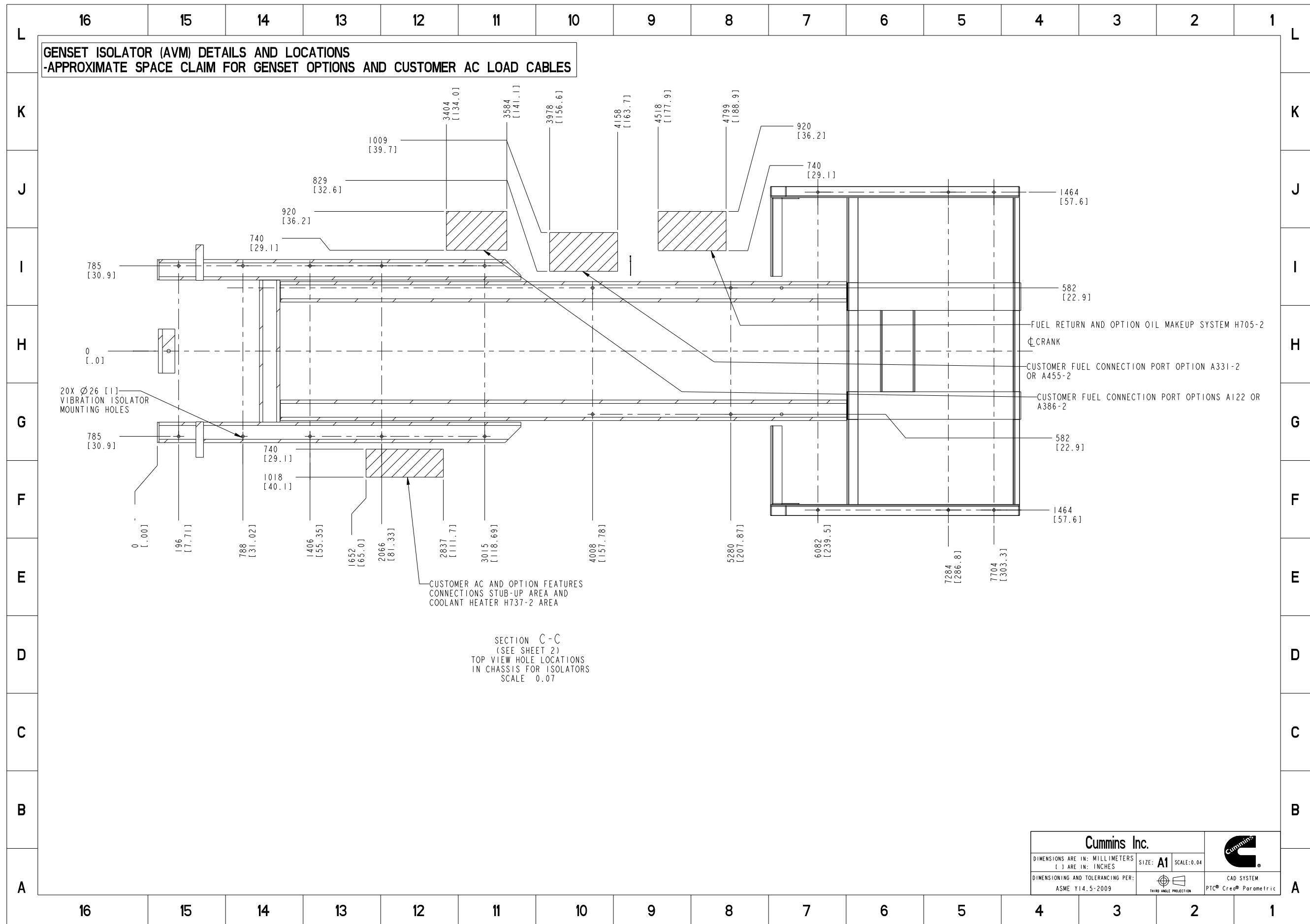


Cummins Data Classification: **Cummins Confidential** This document (and the information shown thereon) is **Confidential and Proprietary** and shall not be disclosed to others in hard copy or electronic form, reproduced by any means, or used for any purpose without written consent of Cummins Inc.

Part Number: **A049P721** Part Revision: **F**
 Part Name: **OUTLINE,GENSET**
 Drawing Category: **Detail** State: **Released** Sheet **6** of **10**



| | | | |
|--|----------|---|-------------------------------------|
| Cummins Inc. | |  | |
| DIMENSIONS ARE IN: MILLIMETERS () ARE IN: INCHES | SIZE: A1 | SCALE: 0.04 | CAD SYSTEM PTC® Creo® Parametric |
| DIMENSIONING AND TOLERANCING PER: ASME Y14.5-2009 | | THIRD ANGLE PROJECTION | |



Document Generated: 25MAR2025 19:04 GMT

Cummins Data Classification: This document (and the information shown thereon) is
Cummins Confidential Confidential and Proprietary and shall not be disclosed to others
 in hard copy or electronic form, reproduced by any means, or used
 for any purpose without written consent of Cummins Inc.

Part Number: **A049P721** Part Revision: **F**
 Part Name: **OUTLINE,GENSET**
 Drawing Category: **Detail** State: **Released** Sheet **8** of **10**



Part Number: A049P721

| | | | |
|-------------------------|----------------|-----------------------|----------------------|
| Change Notice | CN00050468 | Alternates | |
| Manufacturer Part (MEP) | No | Usage | Production Only |
| Release Phase Code | Production (P) | Drawing Specification | Number: A049P721_DET |
| External Regulations | CE, CSA | | Revision: F |

3D image provided when available for visual reference only.

Associated Specifications

| Number | Title | Type | Category | Sub-Category |
|------------|---------------------------------------|---------------------------|------------------------------|----------------|
| 10903 | Substances, Prohibited and Restricted | Engineering Specification | Administrative Specification | Source Control |
| ES10456544 | Controlled Item Identification | Engineering Specification | Administrative Specification | Source Control |

Drawing Revision Information

Description of Change(s)

Note: Change information is provided for reference only and does not supersede the drawing's primary content.

- DRAWING REDRAWN AND RESTRUCTURED
- SHT 1; REARRANGED, UPDATED AND ADDED GENERAL NOTES
- SHT 1; ZONE (C13) CHANGED PHRASE 'AC POWER DISTRIBUTION' WAS 'AC... OUTLET'
- SHT 1; ZONE (C7) CHANGED PHRASE "FUEL ... MFTP SHOWN" WAS "FUEL.. RETURN"
- SHT 1; ZONE (A6) CHANGED PHRASE 'STANDARD.. MVDIG142F8032 ..SHOWN' WAS 'STANDARD...SHOWN'.
- SHT 2; ZONE (K10) ADDED NOTE SEE DETAIL "M"
- SHT 2; ZONE (I15) ADDED NOTE DETAIL "M"
- SHT 2; ZONE (D16) REMOVED DIM '1041'
- SHT 2; ZONE (H16) ADDED DIM '1246'
- SHT 2; ZONE (H14) ADDED DIM '1149'
- SHT 2; ZONE (F14) DIM '925' WAS '905'
- SHT 2; ZONE (E14) DIM '563' WAS '582'
- SHT 2; ZONE (C10) MOVED SECTION VIEW 'C-C' TO SHEET 8
- SHT 2; ZONE (B3) NOTE 'STANDARD --- DETAILS' WAS 'STANDARD --- SHOWN'
- SHT 2; ZONE (B12) ADDED 'SECTION VIEW F-F'
- SHT 2; ZONE (B8) ADDED PHRASE "SOME...CLARITY"
- SHT 3; ZONE (G14) REMOVED PHRASE "FUEL --- STAGE 2"
- SHT 3; ZONE (F16) PHRASE 'BREATHER ---3.0' WAS 'BREATHER --- 4.0'
- SHT 3; ZONE (F15) REMOVED PHRASE "FUEL RETURN #16 JIC 37"
- SHT 3; ZONE (H5) CHANGED PHRASE '3X ...M12 X 1.75' WAS '3XLEADS'
- SHT 3; MOVED DIMENSION "2065", ZONE H8 WAS ZONE H10
- SHT 3; MOVED DIMENSION "1618", ZONE H8 WAS ZONE H10
- SHT 3; ZONE (G10) REMOVED DIM '644'
- SHT 3; ZONE (G9) REMOVED DIM '1230'
- SHT 3; ZONE (G9) ADDED DIM '1230'
- SHT 3; ZONE (G9) ADDED DIM '2506'
- SHT 3; ZONE (G8) ADDED DIM '2X 645'

Cummins Data Classification: **Cummins Confidential** This document (and the information shown thereon) is **Confidential and Proprietary** and shall not be disclosed to others in hard copy or electronic form, reproduced by any means, or used for any purpose without written consent of Cummins Inc.

Part Number: **A049P721** Part Revision: **F**
 Part Name: **OUTLINE,GENSET**
 Drawing Category: **Detail** State: **Released** Sheet **9** of **10**

4

3

2

1

Description of Change(s)

Note: Change information is provided for reference only and does not supersede the drawing's primary content.

- 28. SHT 3; ZONE (F15) UPDATE NOTE 'FUEL...FILTER' WAS 'OIL...PUMP'
- 29. SHT 3; ZONE (B7) RMV VIEW 'DETAIL B'
- 30. SHT 5; ZONE (I14) & (D14) UPDATED VIEW
- 31. SHT 5; ZONE (E15) CHANGED DETAILED VIEW "J" WAS "A".
- 32. SHT 6; UPDATED GENERAL NOTES SEQUENCE.
- 33. SHT 6; ADDED LABEL ON THREE PHASE CABLES AND NEUTRAL CABLES.
- 34. SHT 6; ZONE(C14) UPDATE VIEW 'REAR VIEW COVER REMOVED' WAS 'FRONT VIEW'
- 35. SHT 7; ZONE(B3) REMOVED PHRASE "ACCESSORIES"

ADMINISTRATIVE CHANGE(S) TO PART ATTRIBUTES, BILL OF MATERIAL, OR ASSOCIATED SPECIFICATIONS.

Drawing Authorization

| | | | |
|----------|--------------------|------|-----------|
| Drafter | Nilesh Shelar | Date | 05MAR2025 |
| Checker | James Wade Polacek | Date | 25MAR2025 |
| Approver | Malhon T. Godwin | Date | 25MAR2025 |

D

C

B

A

Cummins Data Classification: **Cummins Confidential** This document (and the information shown thereon) is **Confidential and Proprietary** and shall not be disclosed to others in hard copy or electronic form, reproduced by any means, or used for any purpose without written consent of Cummins Inc.

Part Number: **A049P721** Part Revision: **F**
 Part Name: **OUTLINE,GENSET**
 Drawing Category: **Detail** State: **Released** Sheet **10** of **10**

4

3

2

1