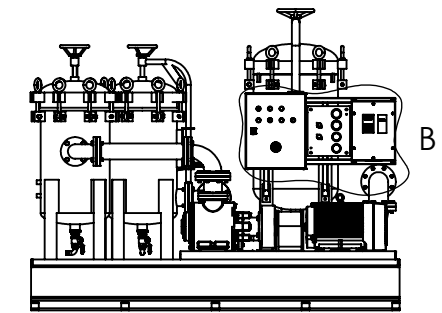
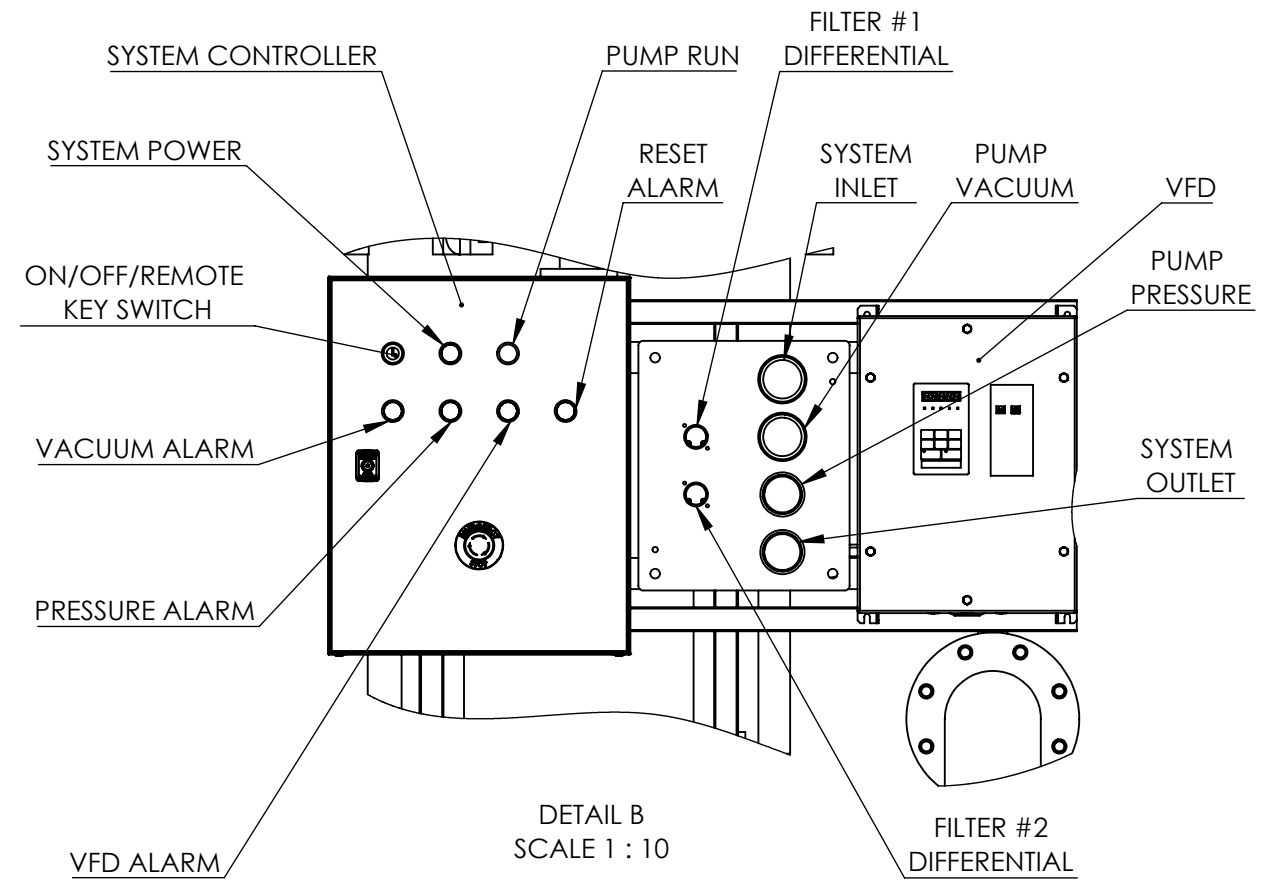
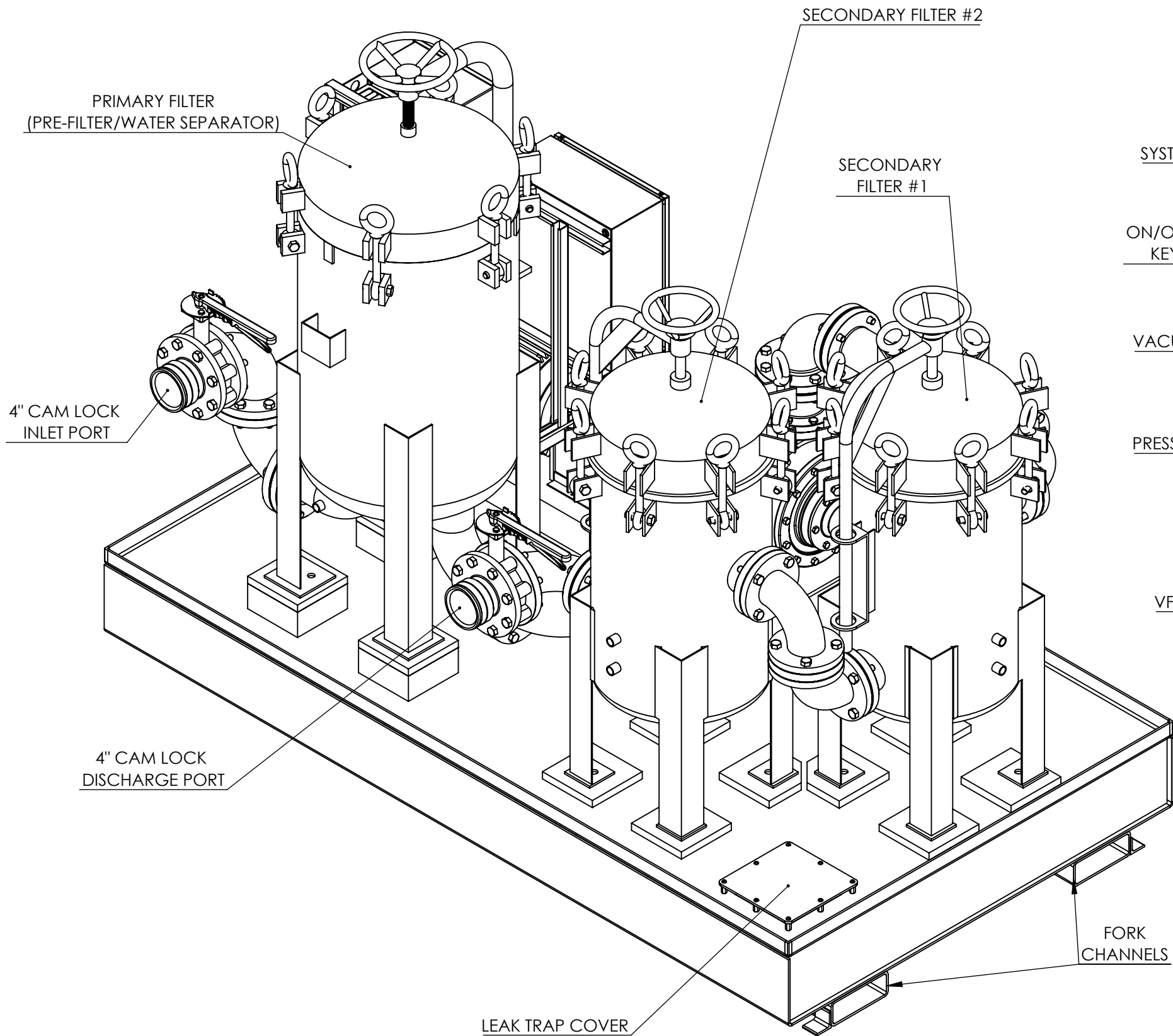

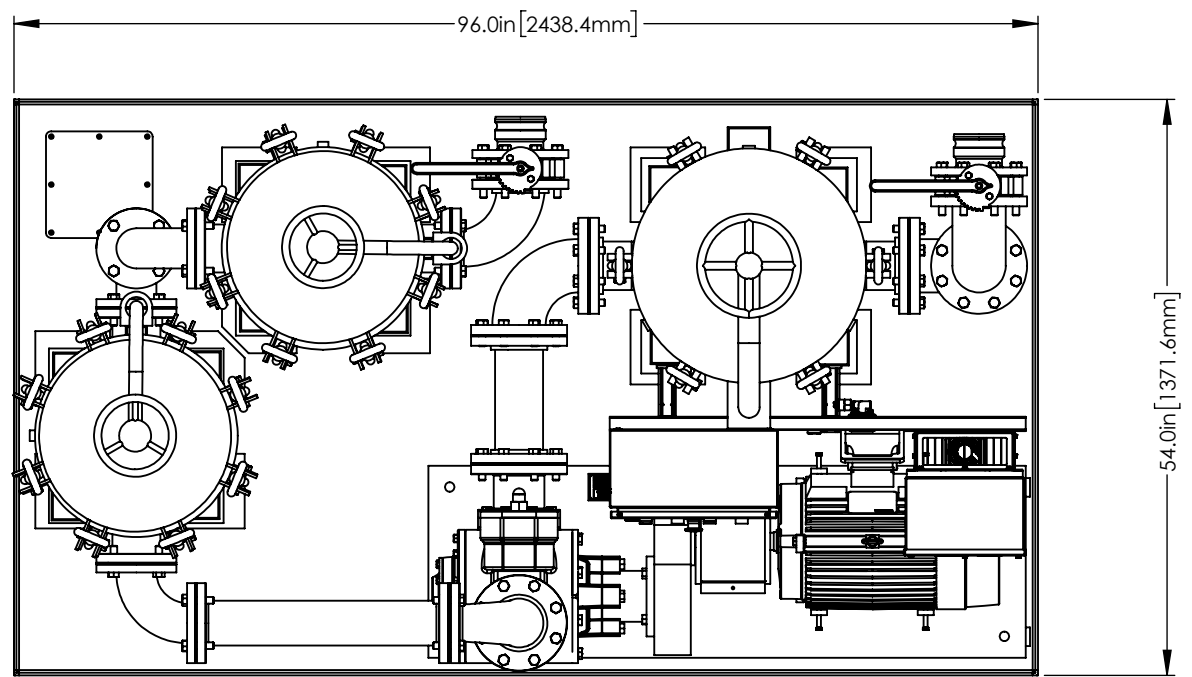


REVISIONS					
ZONE	REV	DESCRIPTION	DATE	BY	DCN
	A	ORIGINAL DESIGN	03/19/18	AFG	
	B	CHANGED MAGNET LENGTH AS BUILT	3/19/2018	AFG	
	C	UPDATED MODEL	11/11/2019	AMG	

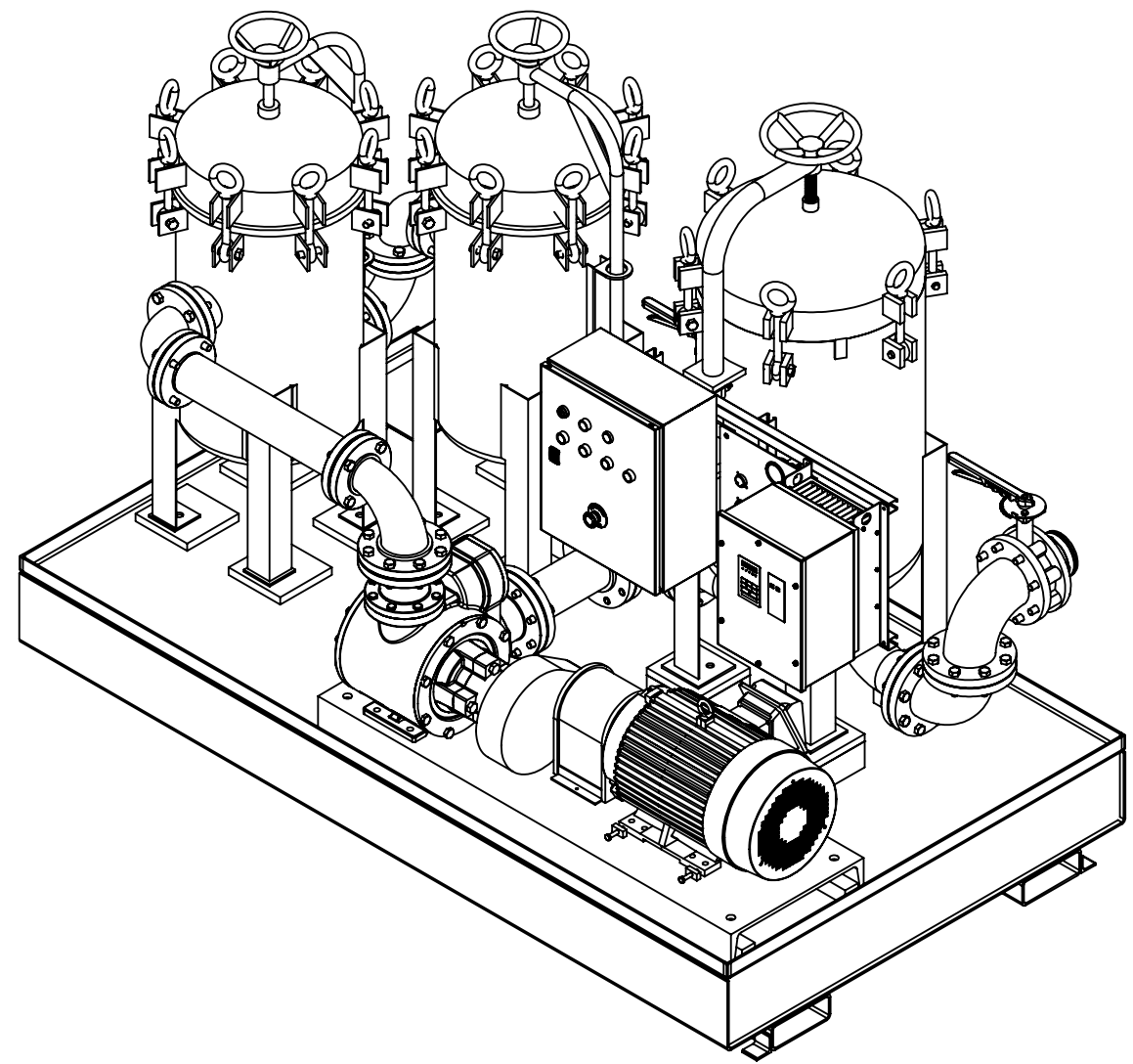


	PROPRIETARY AND CONFIDENTIAL INFORMATION CONTAINED IN THIS DRAWING IS THE SOLE PROPERTY OF AXI INTERNATIONAL. ANY REPRODUCTION IN PART OR AS A WHOLE WITHOUT THE WRITTEN PERMISSION OF AXI INTERNATIONAL IS PROHIBITED.			
	DRAWN BY:	AMG	TITLE:	
CHECKED BY:	-	MTC-HC300 STATIONARY FUEL POLISHING SYSTEM		
THIRD ANGLE PROJECTION	DWG STATUS:	-		
UNLESS OTHERWISE SPECIFIED DIM ARE IN INCHES TOL ON ANGLE ± 0° 30' XX ± .03 XXX ± .010 INTERPRET DIM AND TOL PER ASME Y14.5M - 1994 DO NOT SCALE DRAWING	MATERIAL:	N/A	SIZE	DWG NO.
	FINISH:	N/A	B	89191111-031-0001
			UNIT OF MEASURE: INCH	SCALE 1:12
			SHEET 1 OF 3	REV C

D

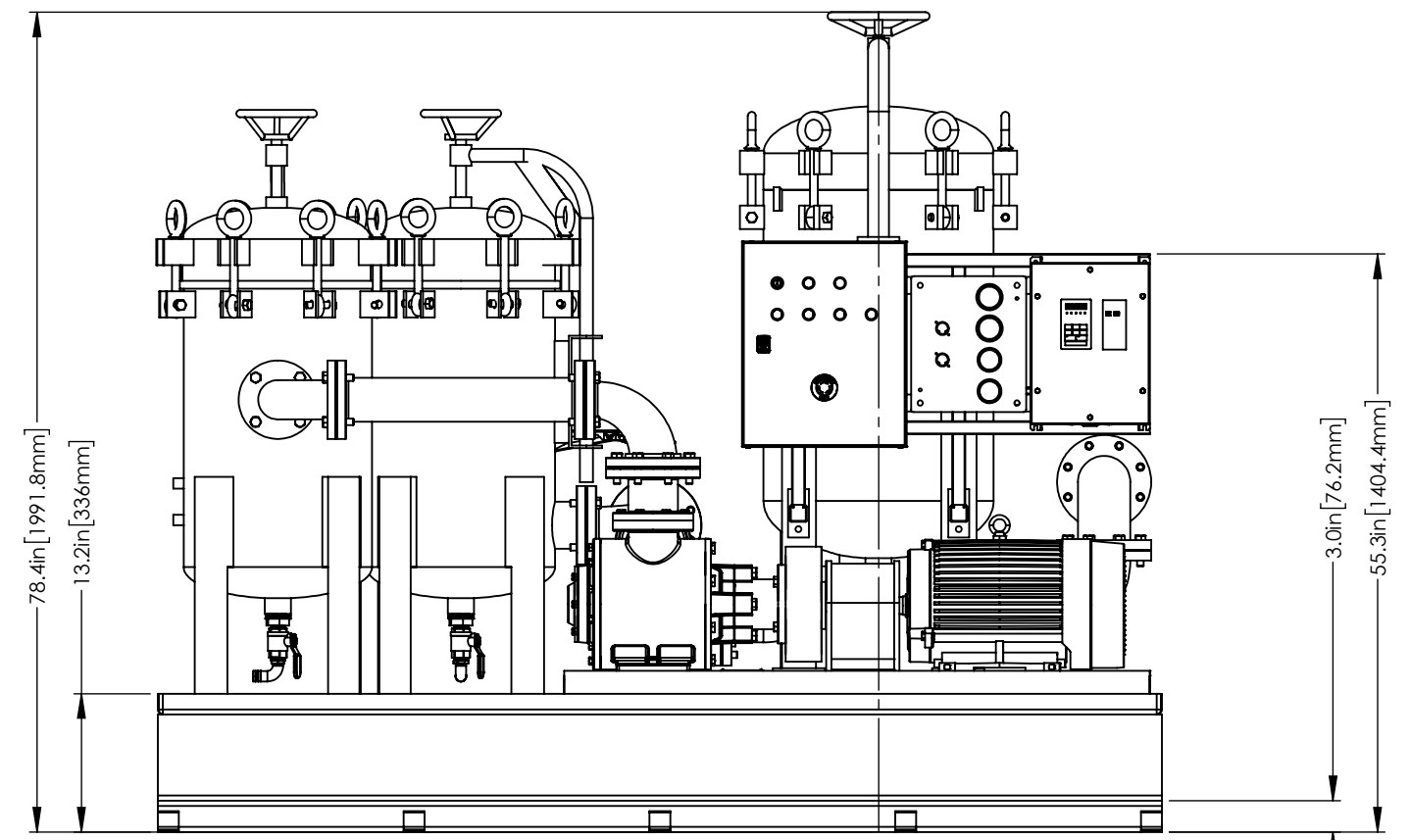


C




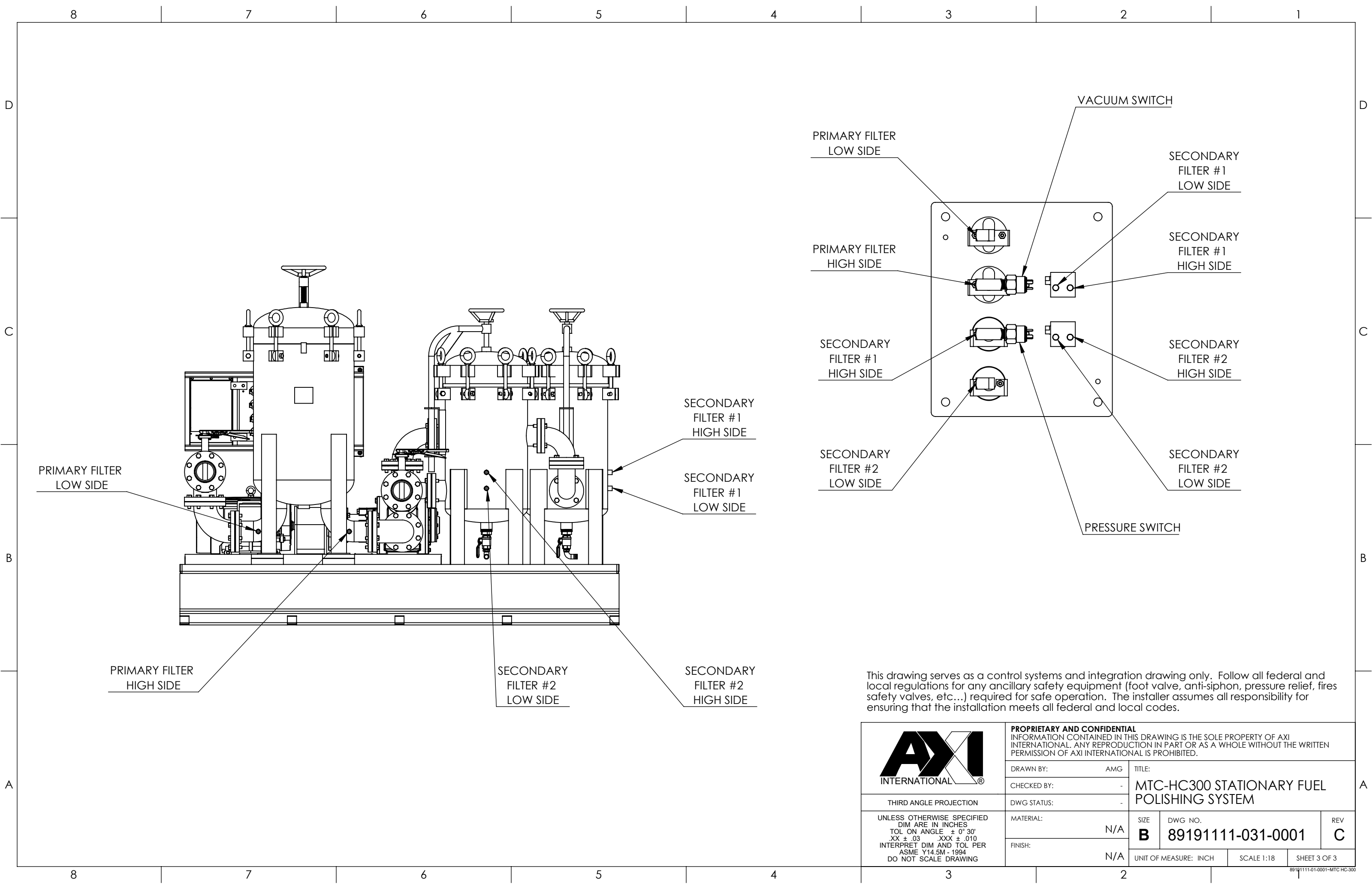
ISOMETRIC REFERENCE

B



A

	PROPRIETARY AND CONFIDENTIAL INFORMATION CONTAINED IN THIS DRAWING IS THE SOLE PROPERTY OF AXI INTERNATIONAL. ANY REPRODUCTION IN PART OR AS A WHOLE WITHOUT THE WRITTEN PERMISSION OF AXI INTERNATIONAL IS PROHIBITED.			
	DRAWN BY: AMG CHECKED BY: - DWG STATUS: -	TITLE: MTC-HC300 STATIONARY FUEL POLISHING SYSTEM	SIZE: B FINISH: N/A	DWG NO.: 89191111-031-0001
THIRD ANGLE PROJECTION UNLESS OTHERWISE SPECIFIED DIM ARE IN INCHES TOL ON ANGLE ± 0° 30' XX ± .03 XXX ± .010 INTERPRET DIM AND TOL PER ASME Y14.5M - 1994 DO NOT SCALE DRAWING	UNIT OF MEASURE: INCH	SCALE 1:18	SHEET 2 OF 3	89191111-01-0001-MTC-HC-300



PRIMARY FILTER
LOW SIDE

PRIMARY FILTER
HIGH SIDE

SECONDARY
FILTER #1
HIGH SIDE

SECONDARY
FILTER #1
LOW SIDE

SECONDARY
FILTER #2
LOW SIDE

SECONDARY
FILTER #2
HIGH SIDE

PRIMARY FILTER
LOW SIDE

PRIMARY FILTER
HIGH SIDE

SECONDARY
FILTER #1
HIGH SIDE

SECONDARY
FILTER #2
LOW SIDE

SECONDARY
FILTER #1
LOW SIDE

SECONDARY
FILTER #1
HIGH SIDE

SECONDARY
FILTER #2
HIGH SIDE

SECONDARY
FILTER #2
LOW SIDE

VACUUM SWITCH

PRESSURE SWITCH

This drawing serves as a control systems and integration drawing only. Follow all federal and local regulations for any ancillary safety equipment (foot valve, anti-siphon, pressure relief, fires safety valves, etc...) required for safe operation. The installer assumes all responsibility for ensuring that the installation meets all federal and local codes.



PROPRIETARY AND CONFIDENTIAL
 INFORMATION CONTAINED IN THIS DRAWING IS THE SOLE PROPERTY OF AXI INTERNATIONAL. ANY REPRODUCTION IN PART OR AS A WHOLE WITHOUT THE WRITTEN PERMISSION OF AXI INTERNATIONAL IS PROHIBITED.

DRAWN BY:	AMG	TITLE:	MTC-HC300 STATIONARY FUEL POLISHING SYSTEM	
CHECKED BY:	-	DWG STATUS:	-	

THIRD ANGLE PROJECTION
 UNLESS OTHERWISE SPECIFIED
 DIM ARE IN INCHES
 TOL ON ANGLE ± 0° 30'
 XX ± .03 XXX ± .010
 INTERPRET DIM AND TOL PER
 ASME Y14.5M - 1994
 DO NOT SCALE DRAWING

MATERIAL:	N/A	SIZE	DWG NO.	REV
FINISH:	N/A	B	89191111-031-0001	C
UNIT OF MEASURE: INCH		SCALE 1:18	SHEET 3 OF 3	